



INSTALLATION GUIDE MANUAL FOR FREEZER-COOLER AD-LOC FC100

Edmonton, Alberta, Canada
Ph: (780) 955-6363
Fax: (780) 955-6377

PROFILE

IMP WALL-ROOF PANELS

DETAILS

TUNG + GROOVE PROFILE

APPLICATION

FREEZER-COOLER

TYPE

AD-LOC FC 100

DATE

APR 1/25

REV.

A

MAX 8' HIGH FOR FLAT

EXTERIOR

FLAT

REVERSABLE
PANEL

EXTERIOR FACING

EXTERIOR FACING

INSULATION

INTERIOR

INTERIOR MESA

35³/₄" COVERAGE

EXTERIOR FACING

—SCREW
LOCATION

1.5"-4"
THICK

VARIABLE

1"

1"

INSULATION

INTERIOR FACING

VERTICAL WALL PANEL

WIDTH: 35³/₄"

PROFILE: MESA/MESA, MESA/FLAT

INSULATION THICKNESS: 1.5", 2", 2.5", 3", 4"

EXTERIOR FACING: 24ga, 26ga

INTERIOR FACING: 24ga, 26ga

AVAILABLE FINISHES: SMOOTH, EMBOSSED

DISCLAIMER

THE DETAILS ARE PROVIDED FOR REFERENCE AND AS A GUIDELINE TO INDUSTRY ACCEPTED PRACTICES FOR SIMPLE BUILDING CONDITIONS. THESE DETAILS DO NOT ADDRESS ALL BUILDING TYPES, CONDITIONS OR DESIGN. THE DETAILS MUST BE CHECKED FOR SUITABILITY AND MODIFIED BASED ON THE PROJECTS INTENDED USE, LOCATION, AND DESIGN LOADS.

A QUALIFIED DESIGN PROFESSIONAL SHOULD BE CONSULTED TO ENSURE MATERIALS, PRODUCTS, AND DESIGN COMPLY WITH APPLICABLE CODES, REGULATIONS, AND STANDARDS. THIS INCLUDES CORRECT PLACEMENT OF SEALANTS, LOCATION OF AIR/VAPOUR BARRIERS AND PROJECT SPECIFIC DESIGN LOADS REQUIRED BY CODE TO MEET THE REQUIREMENTS FOR THE LOCAL AUTHORITIES HAVING JURISDICTION.

STRUCTURAL SUPPORTS AND CONNECTIONS ARE SHOWN FOR ILLUSTRATION PURPOSES ONLY. CONSTRUCTION DRAWINGS GOVERN OVER THESE DETAILS.

ADVANCED PANEL CONTINUES TO REFINE AND IMPROVE BASED ON CHANGES TO THE INDUSTRY. ADVANCED PANEL AND ITS AFFILIATED COMPANIES AND SUPPLIERS RESERVE THE RIGHT TO CHANGE DETAILS, SPECIFICATIONS, DESIGNS, OR PRODUCTS AT ANY TIME. PLEASE CONTACT ADVANCED PANEL OR YOUR LOCAL REPRESENTATIVE FOR THE LATEST INFORMATION AVAILABLE.

NOTES:

A. DETAILS ARE FOR GUIDELINES ONLY, AND MAY NOT BE SUITABLE FOR ALL BUILDING DESIGNS AND CONDITIONS.

PROFILE

IMP WALL-ROOF PANELS

APPLICATION

FREEZER-COOLER

DETAILS

FREEZER-COOLER

TYPE

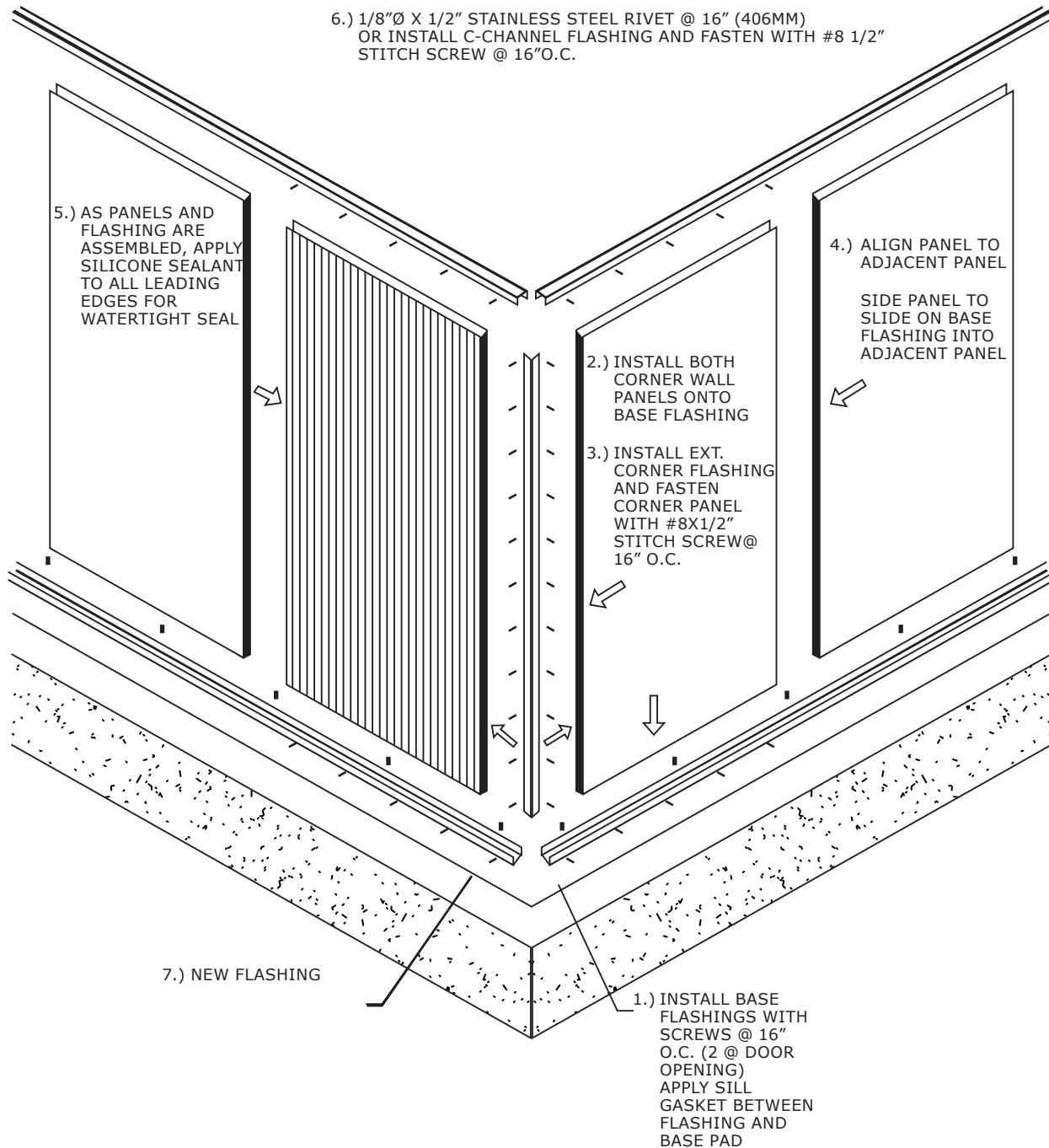
AD-LOC FC 100

DATE

APR 1/25

REV.

A



NOTES:

A. Details are for guidelines only, and may not be suitable for all building designs and conditions.

B. Screw lengths may vary per customer request.

PROFILE

IMP WALL-ROOF PANELS

APPLICATION

FREEZER-COOLER

DETAILS

INTERIOR WALL TO CONCRETE SLAB ON GRADE DETAIL

TYPE

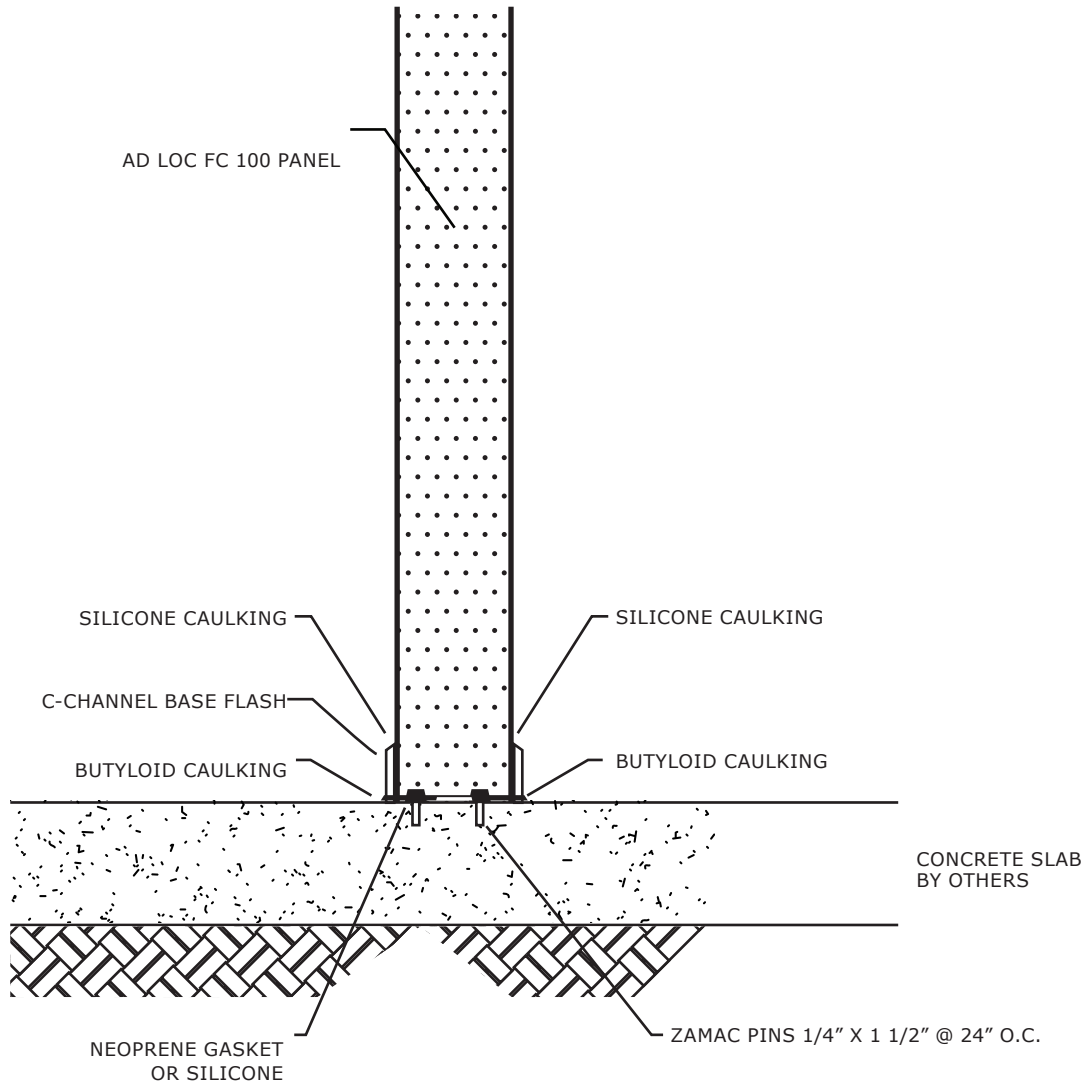
AD-LOC FC 100

DATE

APR 1/25

REV.

A



NOTES:

- All prepainted material must have USDA approval.
- Typical screw spacing @ 16" O.C. unless otherwise noted.
- Typical flashing length 120" unless otherwise noted.
- Panel must be field cut to prevent thermal bridging.

PROFILE

IMP WALL-ROOF PANELS

APPLICATION

FREEZER-COOLER

DETAILS

EXTERIOR WALL TO CONCRETE SLAB DETAIL

TYPE

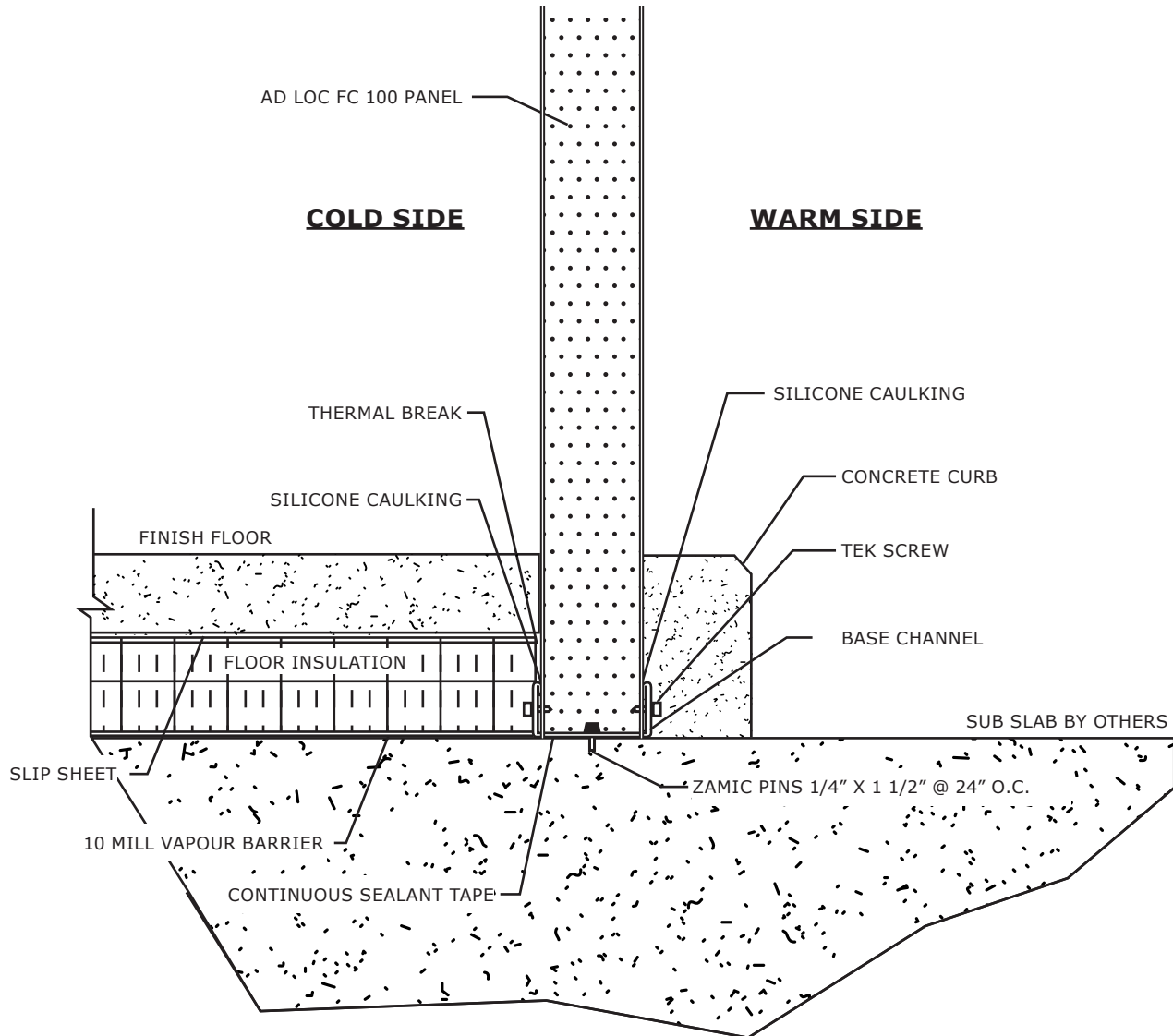
AD-LOC FC 100

DATE

APR 1/25

REV.

A



NOTES:

- All prepainted material must have USDA approval.
- Typical screw spacing @ 16" O.C. unless otherwise noted.
- Typical flashing length 120" unless otherwise noted.
- Panel must be field cut to prevent thermal bridging.

PROFILE

IMP WALL-ROOF PANELS

APPLICATION

FREEZER-COOLER

DETAILS

INTERIOR WALL TO CONCRETE SLAB DETAIL

TYPE

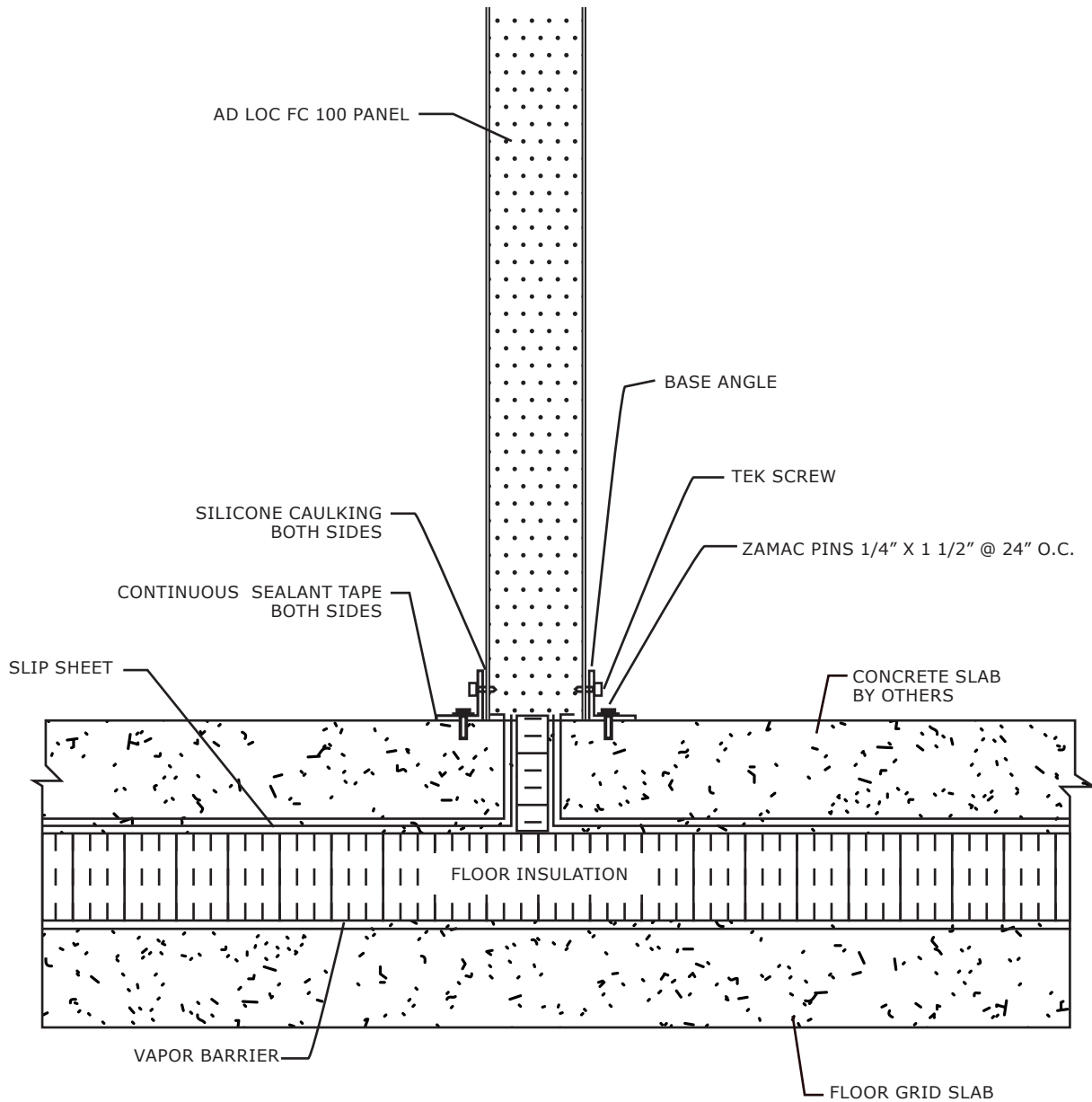
AD-LOC FC 100

DATE

APR 1/25

REV.

A



NOTES:

- All prepainted material must have USDA approval.
- Typical screw spacing @ 16" O.C. unless otherwise noted.
- Typical flashing length 120" unless otherwise noted.
- Panel must be field cut to prevent thermal bridging.

PROFILE

IMP WALL-ROOF PANELS

APPLICATION

FREEZER-COOLER

DETAILS

EXTERIOR WALL TO CONCRETE CURB DETAIL

TYPE

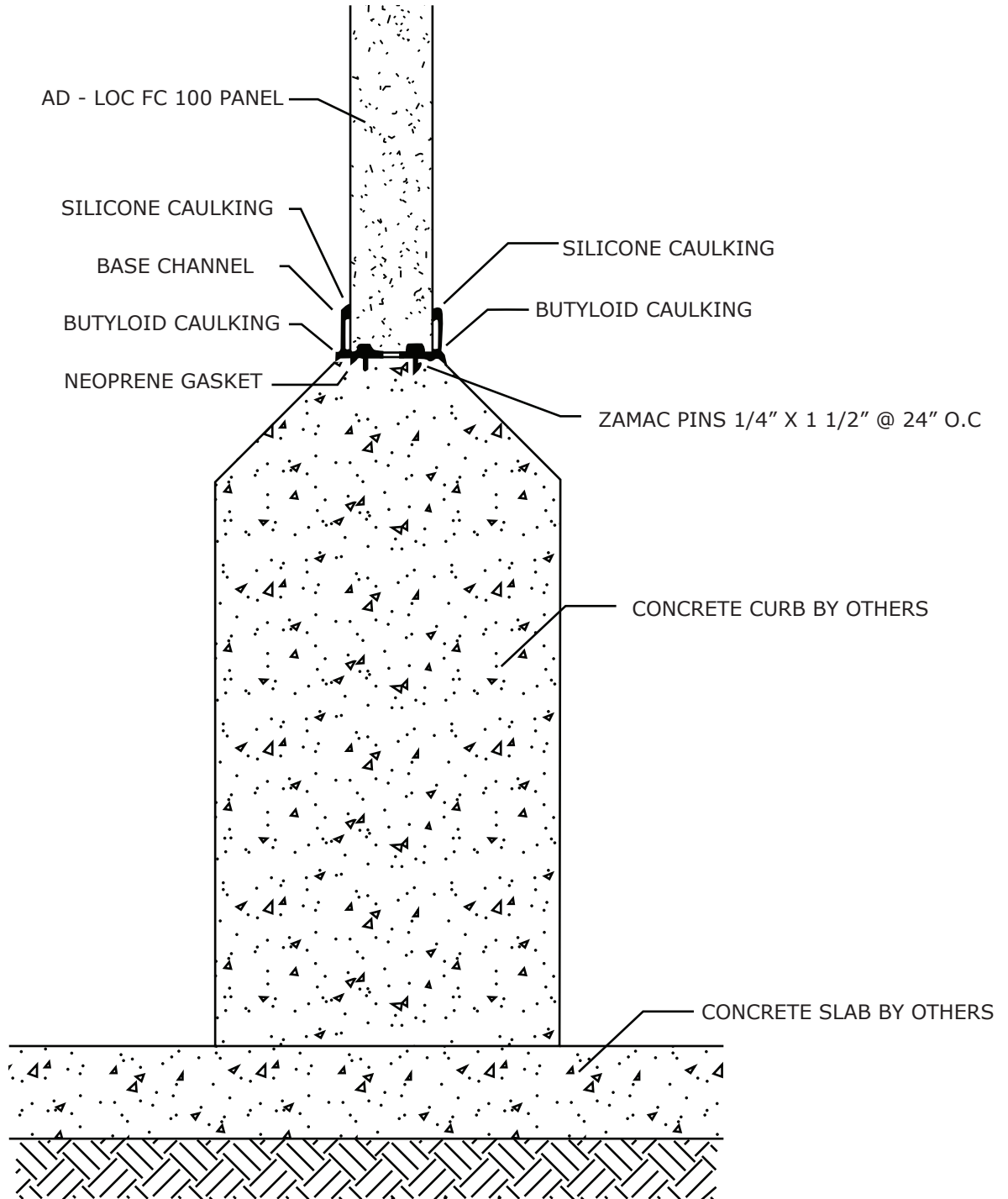
AD-LOC FC 100

DATE

APR 1/25

REV.

A



NOTES:

- All prepainted material must have USDA approval.
- Typical screw spacing @ 16" O.C. unless otherwise noted.
- Typical flashing length 120" unless otherwise noted.
- Panel must be field cut to prevent thermal bridging.

PROFILE

IMP WALL-ROOF PANELS

APPLICATION

FREEZER-COOLER

DETAILS

FREEZER FLOOR TO WALL CONNECTION DETAIL

TYPE

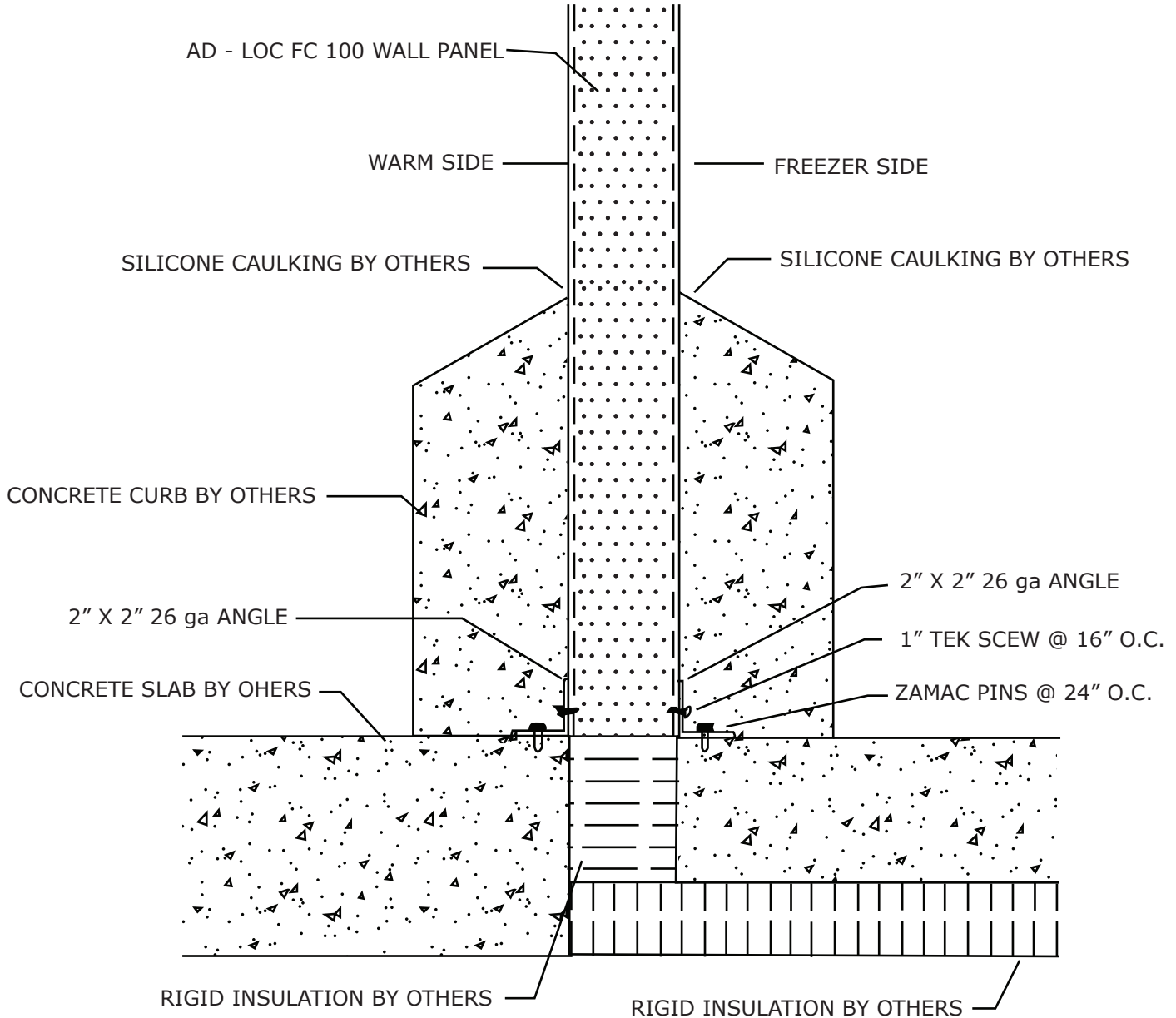
AD-LOC FC 100

DATE

APR 1/25

REV.

A



NOTES:

- All prepainted material must have USDA approval.
- Typical screw spacing @ 16" O.C. unless otherwise noted.
- Typical flashing length 120" unless otherwise noted.
- Panel must be field cut to prevent thermal bridging.

PROFILE

IMP WALL-ROOF PANELS

APPLICATION

FREEZER-COOLER

DETAILS

INTERIOR WALL TO INTERIOR WALL DETAIL

TYPE

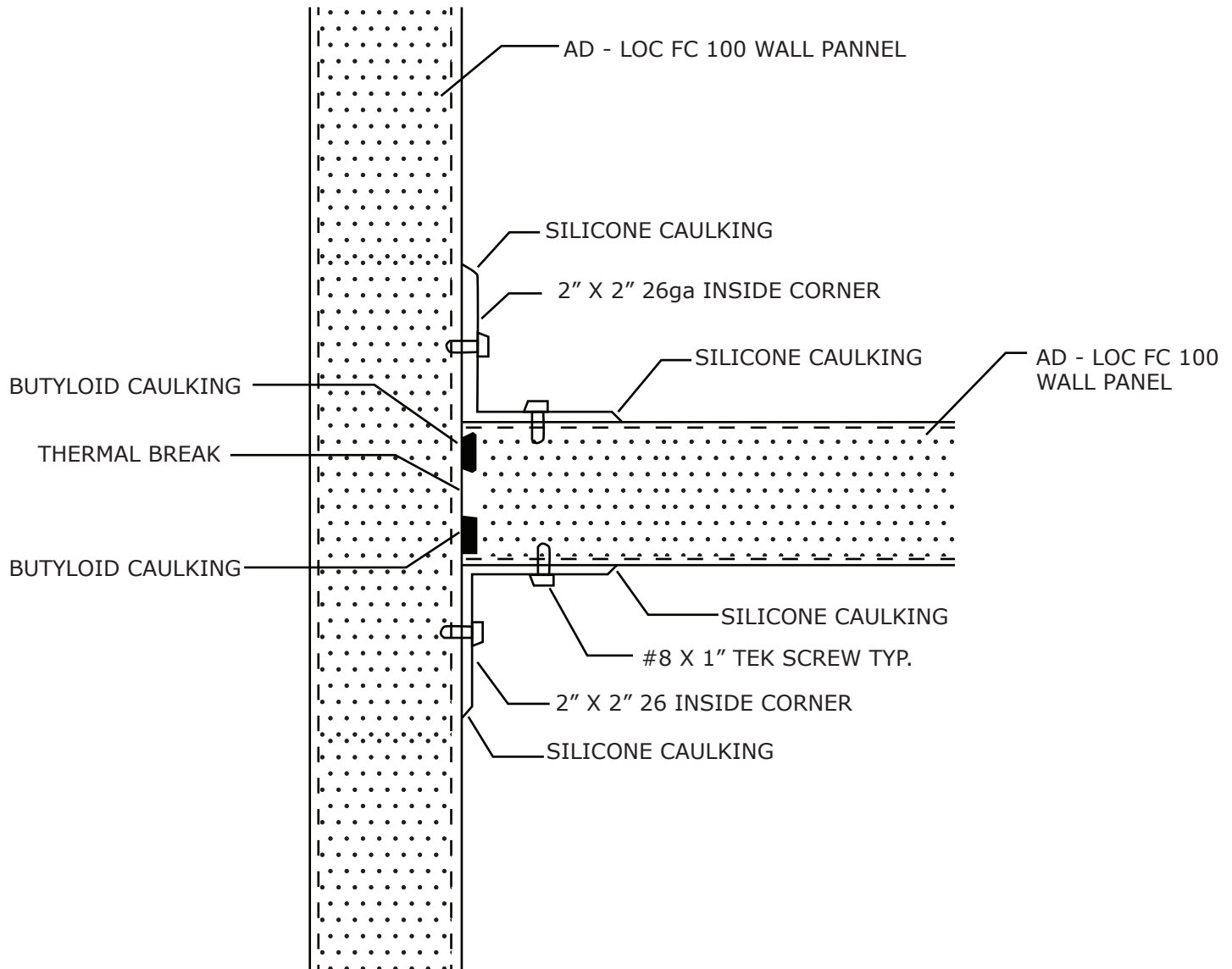
AD-LOC FC 100

DATE

APR 1/25

REV.

A



NOTES:

- All prepainted material must have USDA approval.
- Typical screw spacing @ 16" O.C. unless otherwise noted.
- Typical flashing length 120" unless otherwise noted.
- Panel must be field cut to prevent thermal bridging.

PROFILE

IMP WALL-ROOF PANELS

DETAILS

WALL PANEL JOINT DETAIL

APPLICATION

FREEZER-COOLER

TYPE

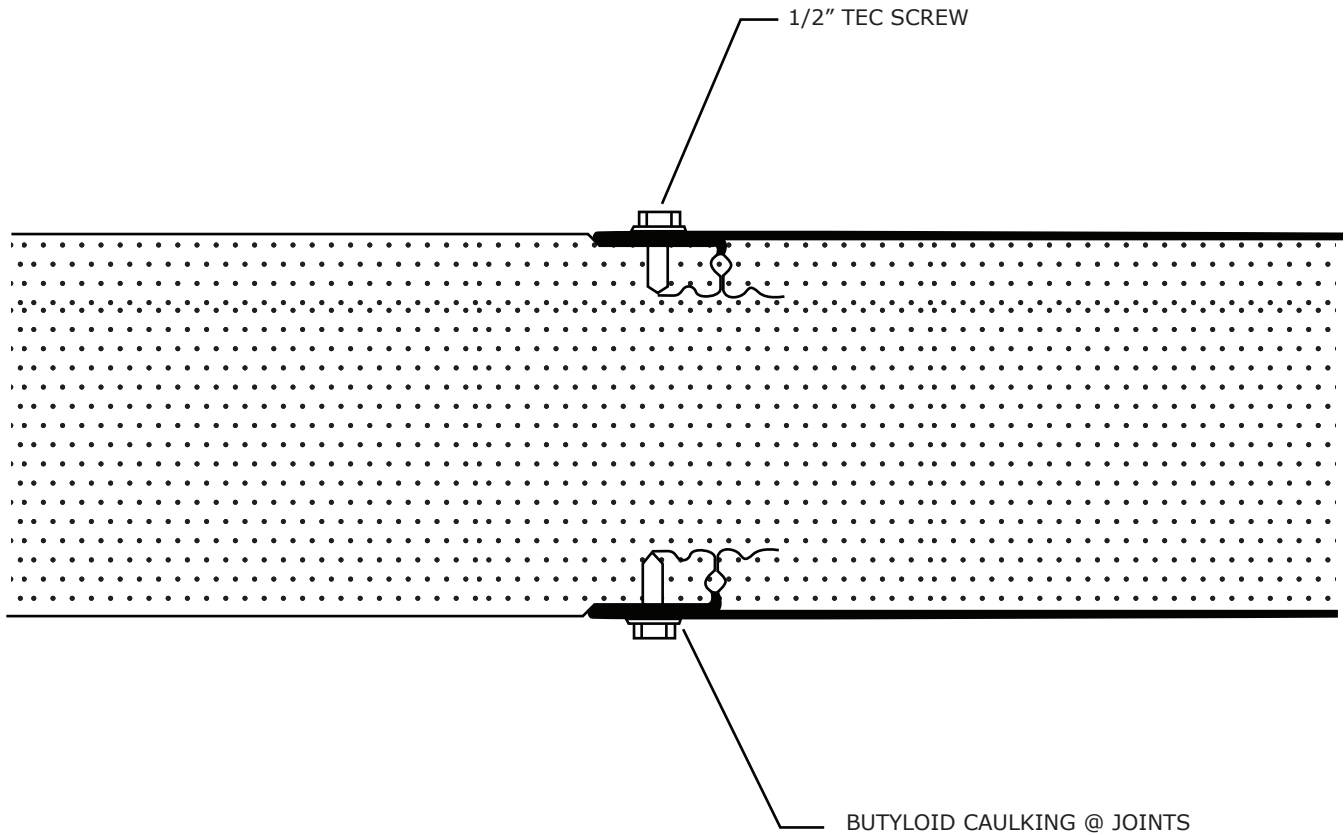
AD-LOC FC 100

DATE

APR 1/25

REV.

A



NOTES:

- All prepainted material must have USDA approval.
- Typical screw spacing @ 16" O.C. unless otherwise noted.
- Typical flashing length 120" unless otherwise noted.
- Panel must be field cut to prevent thermal bridging.

PROFILE

IMP WALL-ROOF PANELS

APPLICATION

FREEZER-COOLER

DETAILS

RADIUS CORNER DETAIL

TYPE

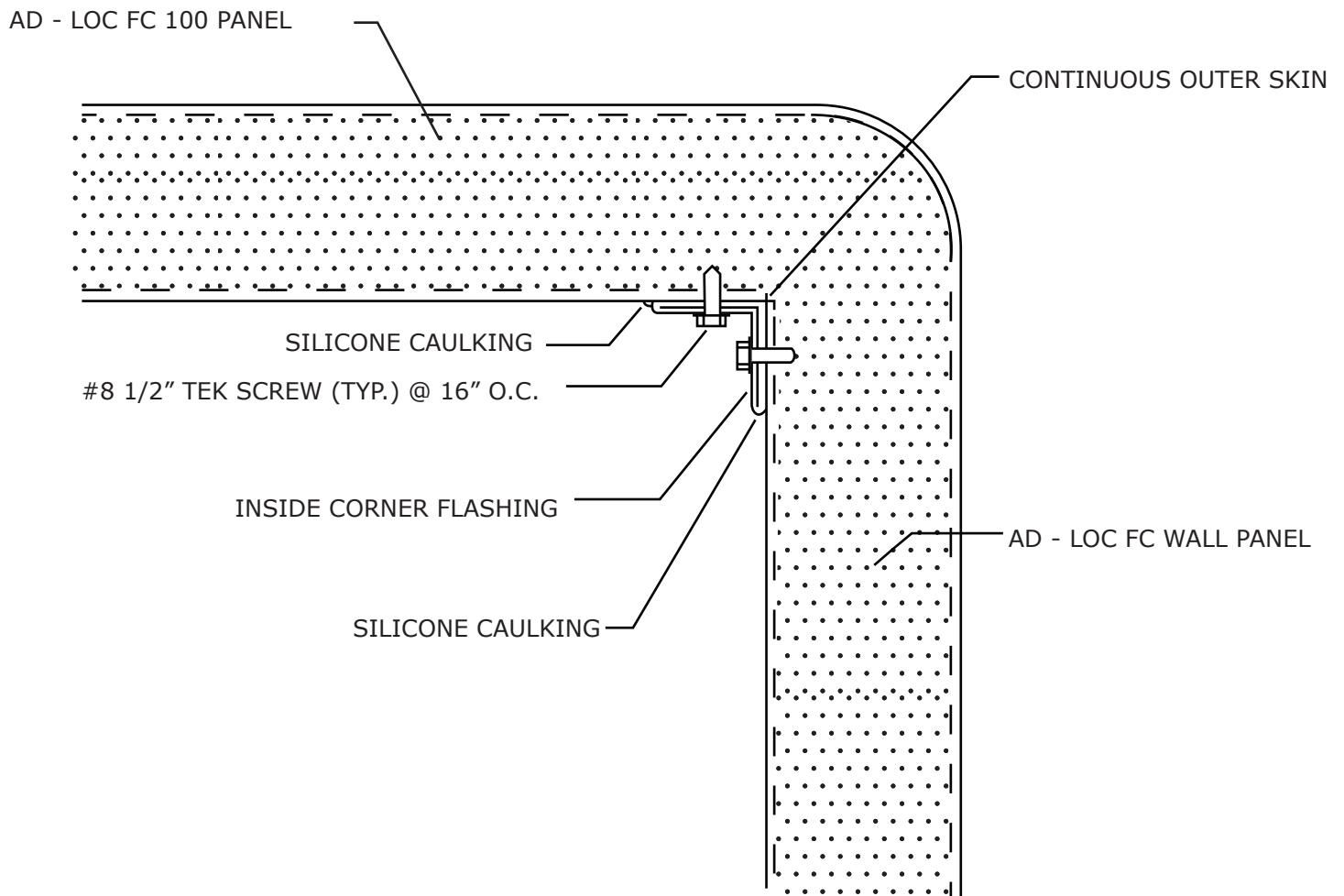
AD-LOC FC 100

DATE

APR 1/25

REV.

A



NOTES:

- All prepainted material must have USDA approval.
- Typical screw spacing @ 16" O.C. unless otherwise noted.
- Typical flashing length 120" unless otherwise noted.
- Panel must be field cut to prevent thermal bridging.

PROFILE

IMP WALL-ROOF PANELS

APPLICATION

FREEZER-COOLER

DETAILS

EXTERIOR WALL CORNER DETAIL

TYPE

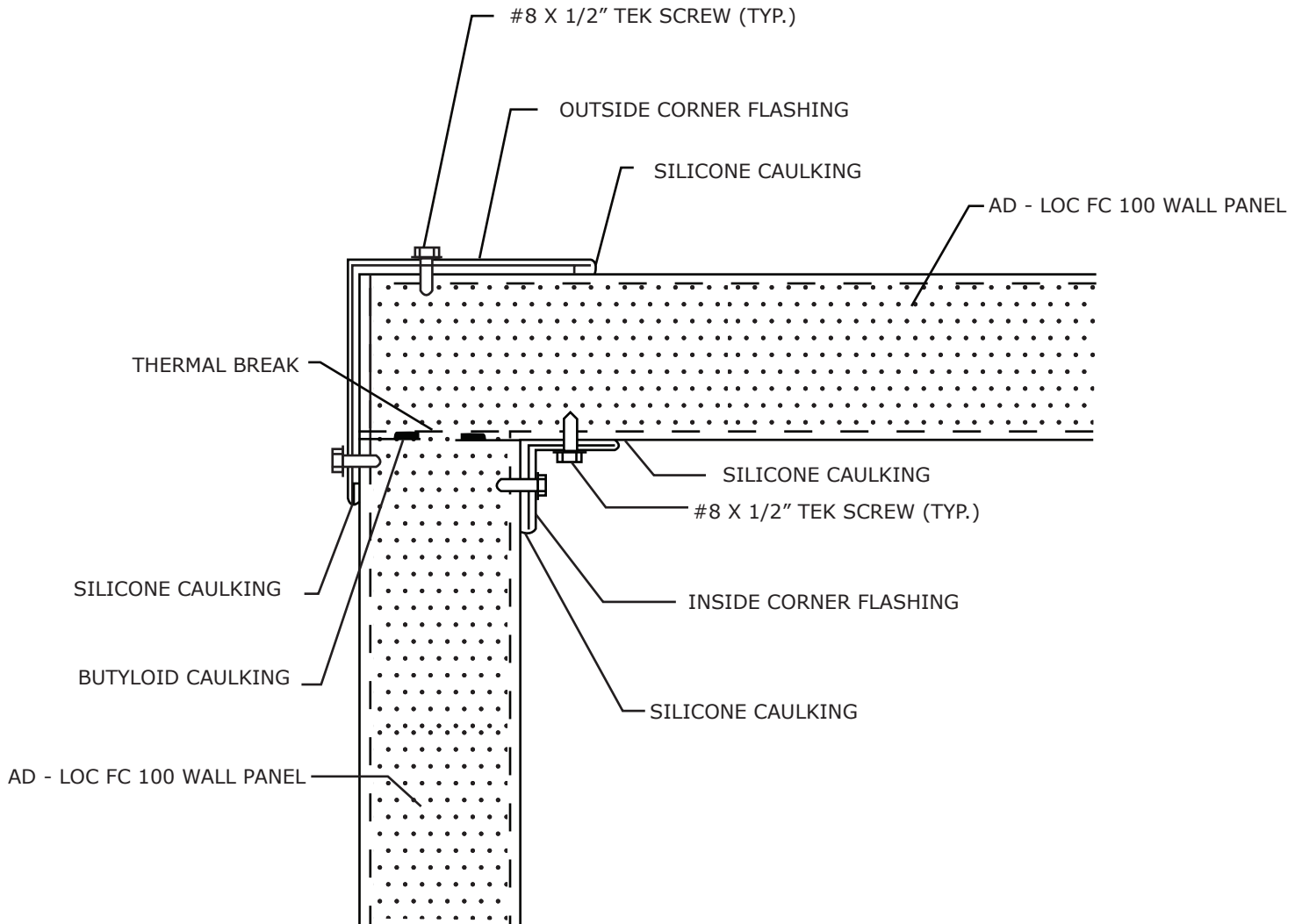
AD-LOC FC 100

DATE

APR 1/25

REV.

A



NOTES:

- All prepainted material must have USDA approval.
- Typical screw spacing @ 16" O.C. unless otherwise noted.
- Typical flashing length 120" unless otherwise noted.
- Panel must be field cut to prevent thermal bridging.

PROFILE

IMP WALL-ROOF PANELS

APPLICATION

FREEZER-COOLER

DETAILS

EXTERIOR WALL TO CEILING DETAIL

TYPE

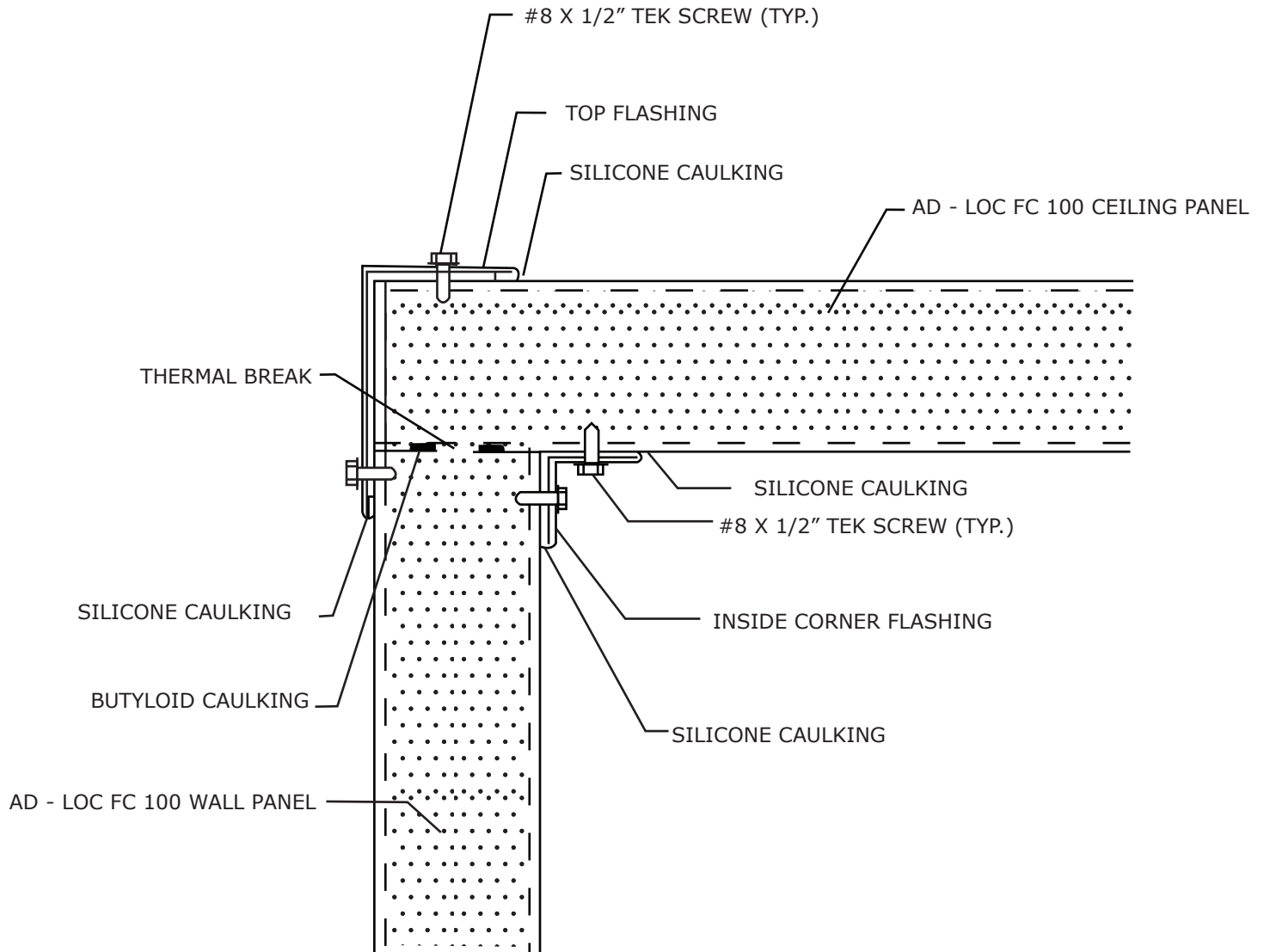
AD-LOC FC 100

DATE

APR 1/25

REV.

A



NOTES:

- All prepainted material must have USDA approval.
- Typical screw spacing @ 16" O.C. unless otherwise noted.
- Typical flashing length 120" unless otherwise noted.
- Panel must be field cut to prevent thermal bridging.

PROFILE

IMP WALL-ROOF PANELS

APPLICATION

FREEZER-COOLER

DETAILS

STACK JOINT SUSPENDED CEILING SYSTEM

TYPE

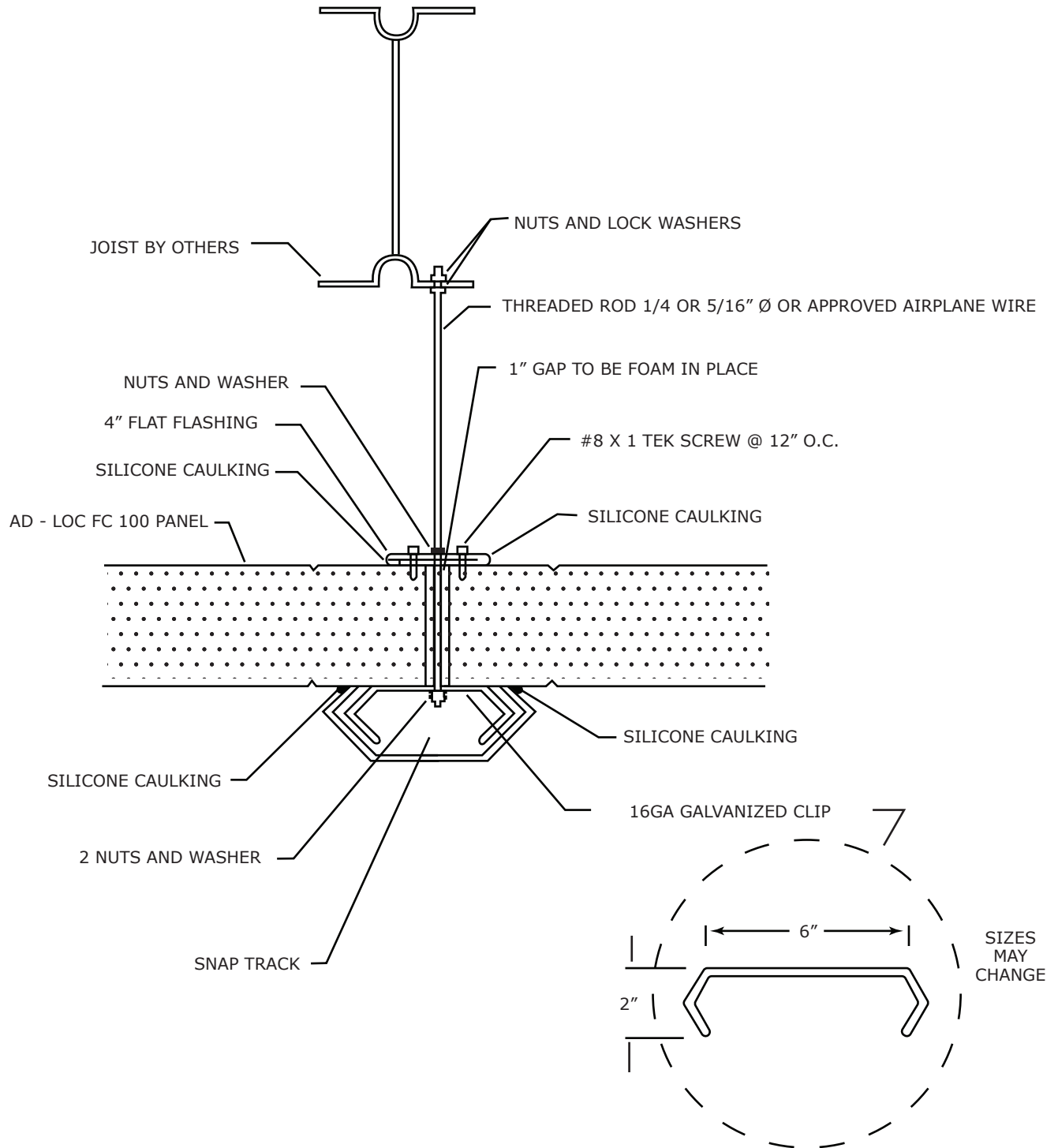
AD-LOC FC 100

DATE

APR 1/25

REV.

A



NOTES:

- All prepainted material must have USDA approval.
- Typical screw spacing @ 16" O.C. unless otherwise noted.
- Typical flashing length 120" unless otherwise noted.
- Panel must be field cut to prevent thermal bridging.

PROFILE

IMP WALL-ROOF PANELS

APPLICATION

FREEZER-COOLER

DETAILS

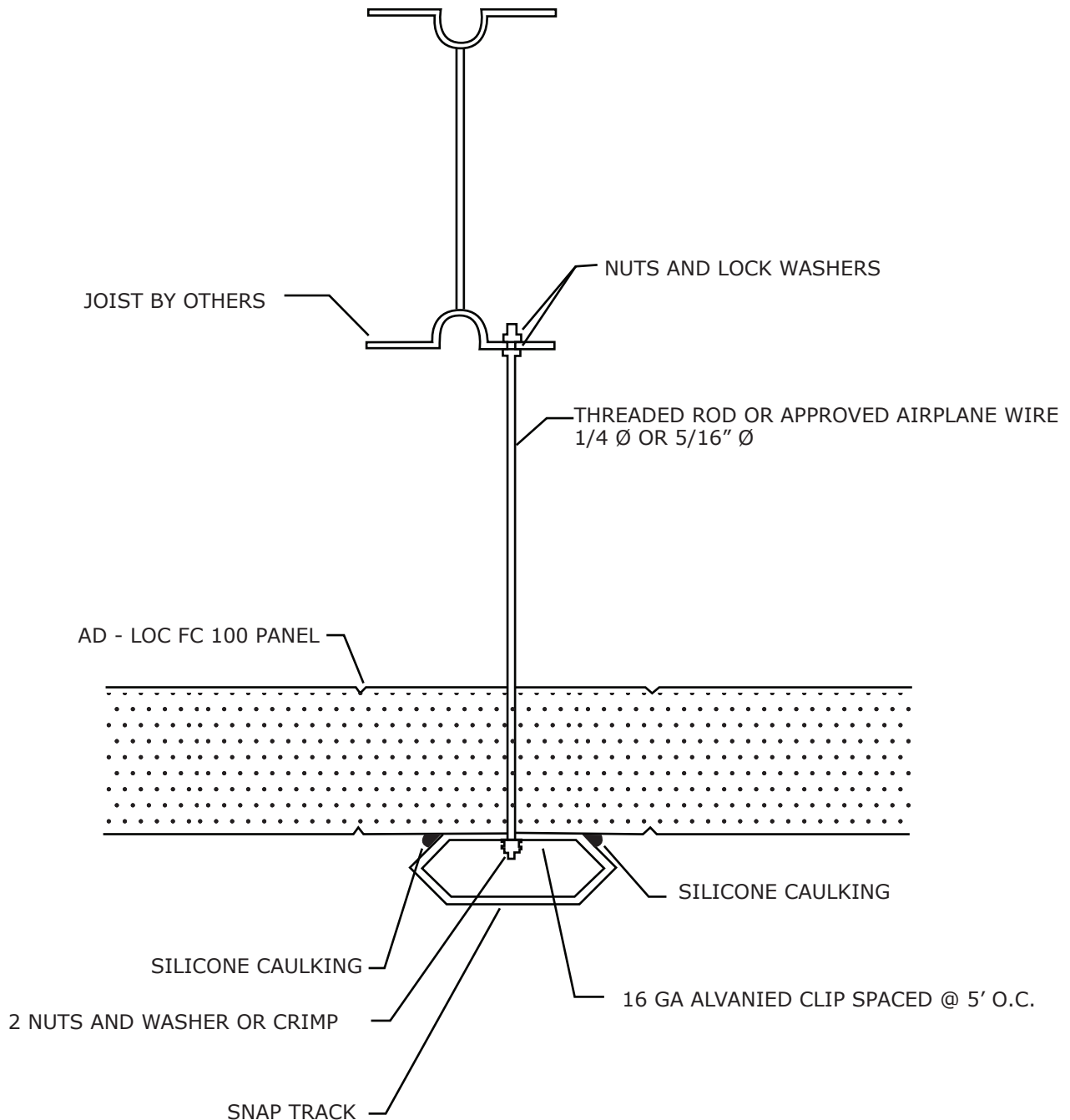
SNAP TRACK SUSPENDED CEILING SYSTEM AD-LOC FC 100

DATE

APR 1/25

REV.

A



NOTES:

- All prepainted material must have USDA approval.
- Typical flashing length 120" unless otherwise noted.

- Typical screw spacing @ 16" O.C. unless otherwise noted.
- Panel must be field cut to prevent thermal bridging.
- Consult engineer on spacing and rod or wire spacing.

Place first roof panel on top of wall facing downwards, ensuring that it is plumb to walls, then fasten to building. If walls need to be moved in or out a little, do so before fastening. Stich screw roof panels @ 12" o.c. at each connection as in figure 1.

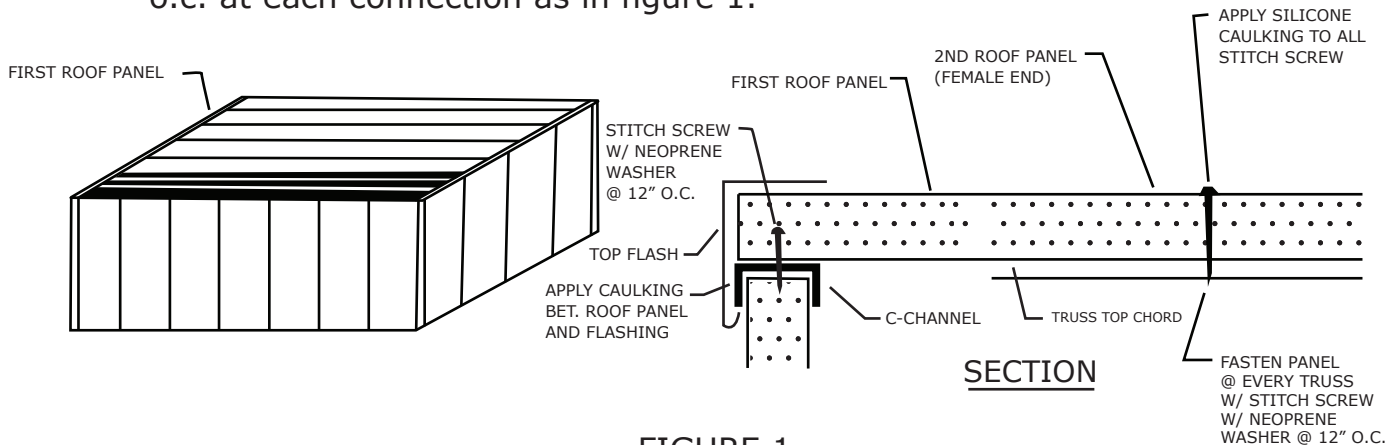


FIGURE 1

Continue installing roof panels, measure and cut last panel to fit. Then move to other side and do the same.

Next, the Top Flash flashing is to be installed if required. Install top wall flashing first. The top wall flashing must extend past either end equal to the depth of the flashing itself, figure 2, 3 and 4.

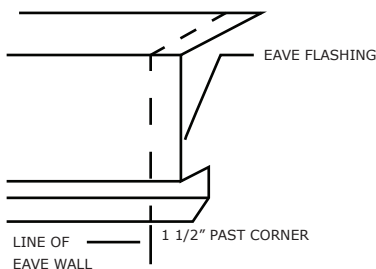


FIGURE 2

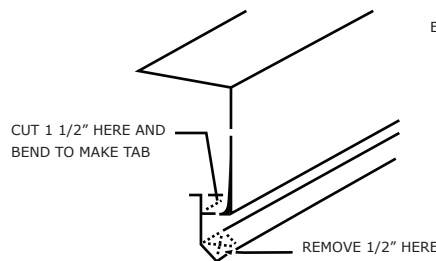


FIGURE 3

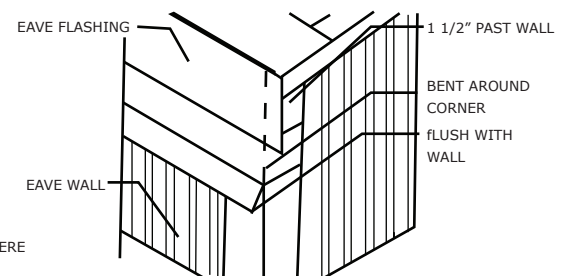


FIGURE 4

NOTES:

- All prepainted material must have USDA approval.
- Typical screw spacing @ 16" O.C. unless otherwise noted.
- Typical flashing length 120" unless otherwise noted.
- Panel must be field cut to prevent thermal bridging.

22.0 Next, install gable end (gable flashing) as in figure 5

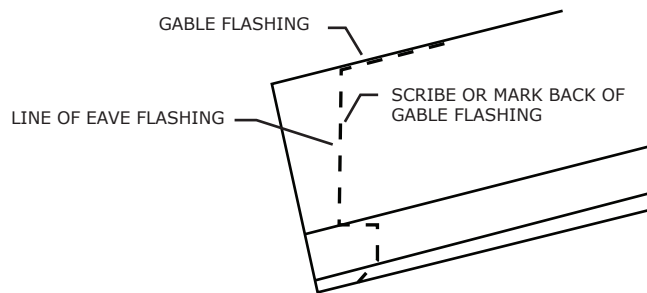


FIGURE 5

Once location of top flashing is marked on the wall flashing, a tab must be made as shown in figure 6

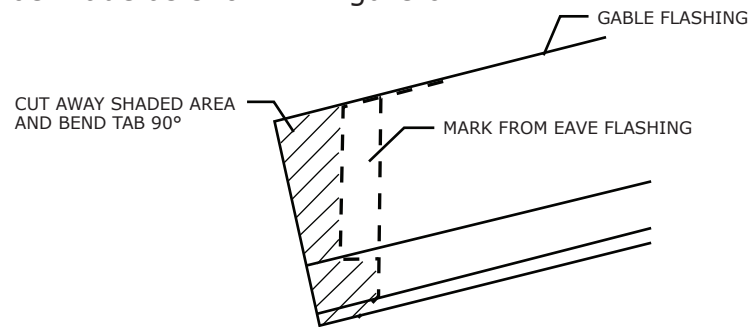


FIGURE 6

When finished, corner should look like figure 7

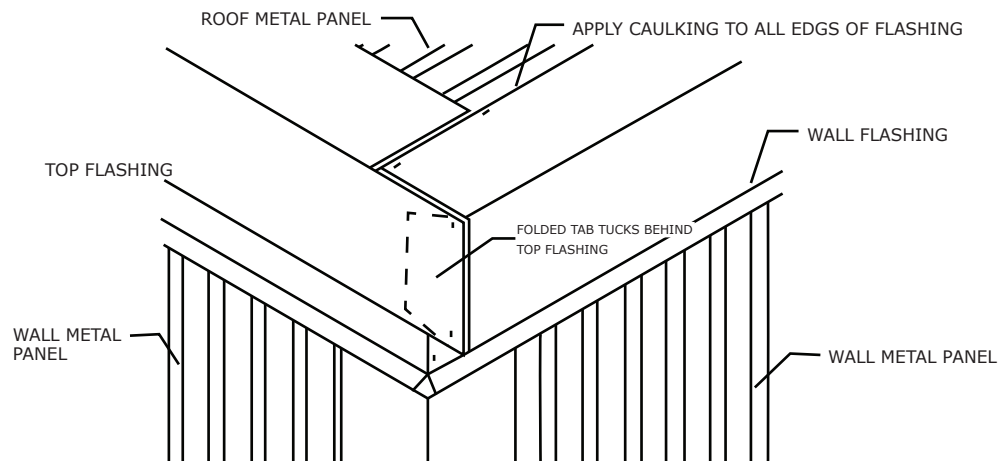


FIGURE 7

NOTES:

- All prepainted material must have USDA approval.
- Typical screw spacing @ 16" O.C. unless otherwise noted.
- Typical flashing length 120" unless otherwise noted.
- Panel must be field cut to prevent thermal bridging.

PROFILE

IMP WALL-ROOF PANELS

APPLICATION

FREEZER-COOLER

DETAILS

BASE-TOP

TYPE

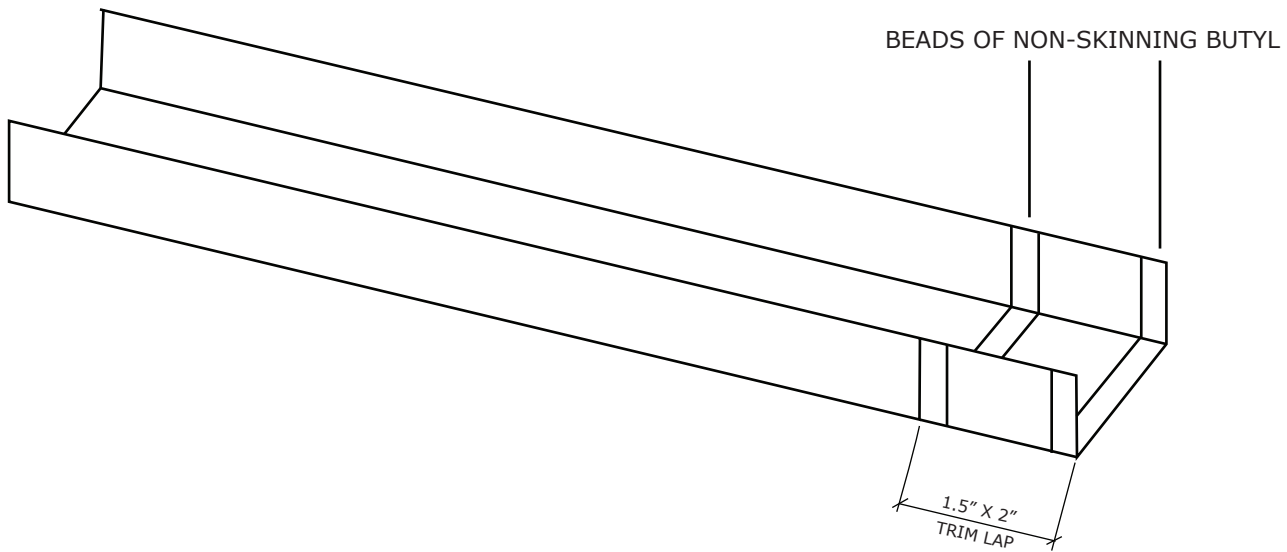
AD-LOC FC 100

DATE

APR 1/25

REV.

A



NOTES:

A. Details are for guidelines only, and may not be suitable for all building designs and conditions.

B. Screw lengths may vary per customer request.

PROFILE

IMP WALL + ROOF PANELS

APPLICATION

FREEZER-COOLER

DETAILS

TRIM END LAP - CORNER

TYPE

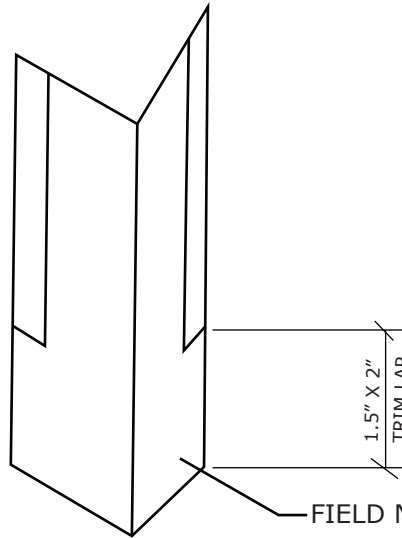
AD-LOC FC 100

DATE

APR 1/25

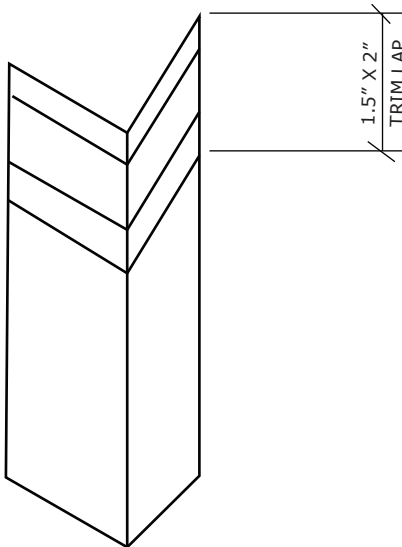
REV.

A



FIELD NOTCH HEM(S) AS REQUIRED

2 BEADS OF NON-SKINNING BUTYL



NOTE:

- RIVET OR STITCH SCREW AS NECESSARY

NOTES:

A. Details are for guidelines only, and may not be suitable for all building designs and conditions.

B. Screw lengths may vary per customer request.

PROFILE

IMP WALL-ROOF PANELS

APPLICATION

FREEZER-COOLER

DETAILS

TRIM END LAP - TOP FLASH

TYPE

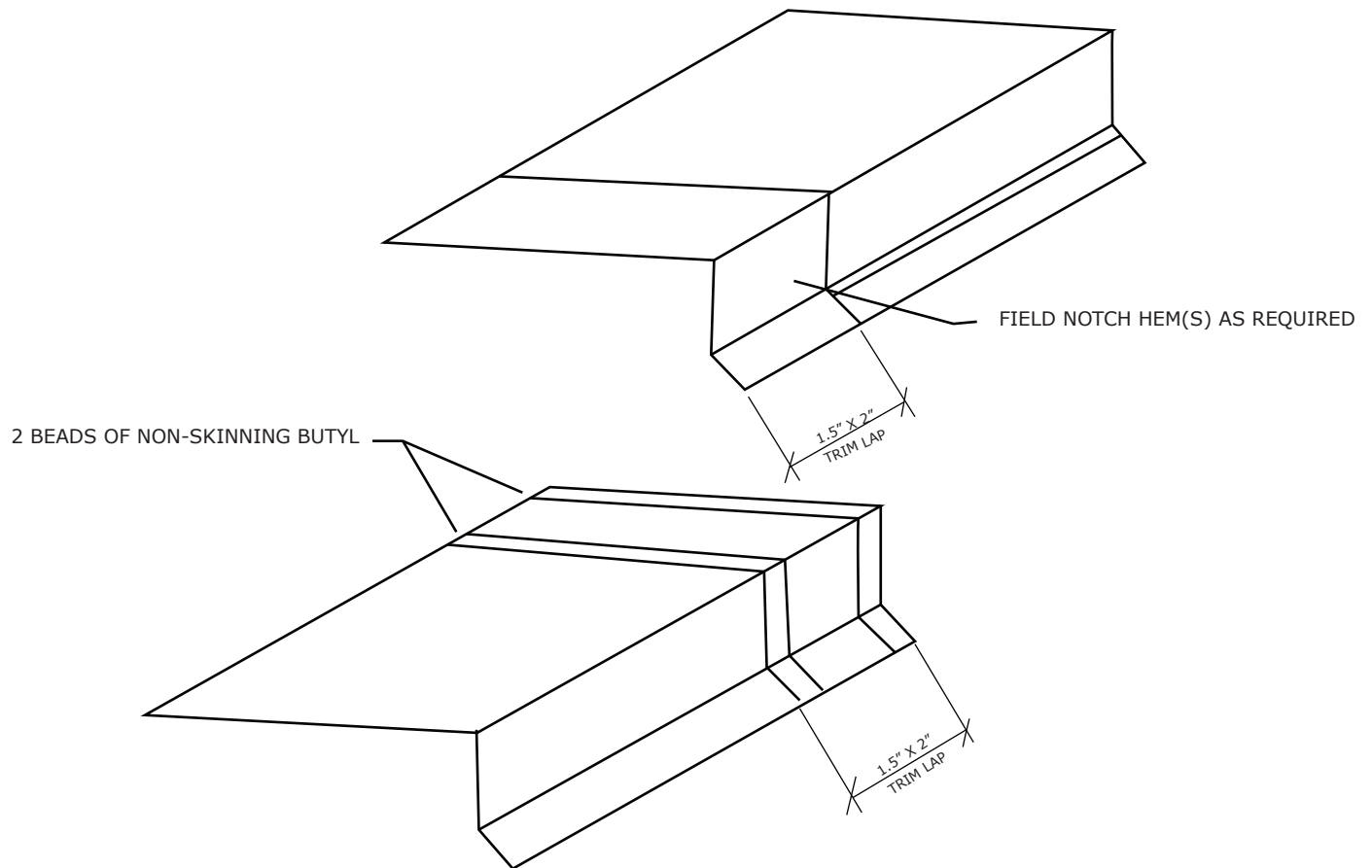
AD-LOC FC 100

DATE

APR 1/25

REV.

A



NOTE:
- RIVET OR STITCH SCREW AS NECESSARY

NOTES:

A. Details are for guidelines only, and may not be suitable for all building designs and conditions.

B. Screw lengths may vary per customer request.

PROFILE

IMP WALL-ROOF PANELS

APPLICATION

FREEZER-COOLER

DETAILS

TRIM END LAP - TWO PIECE JAMB

TYPE

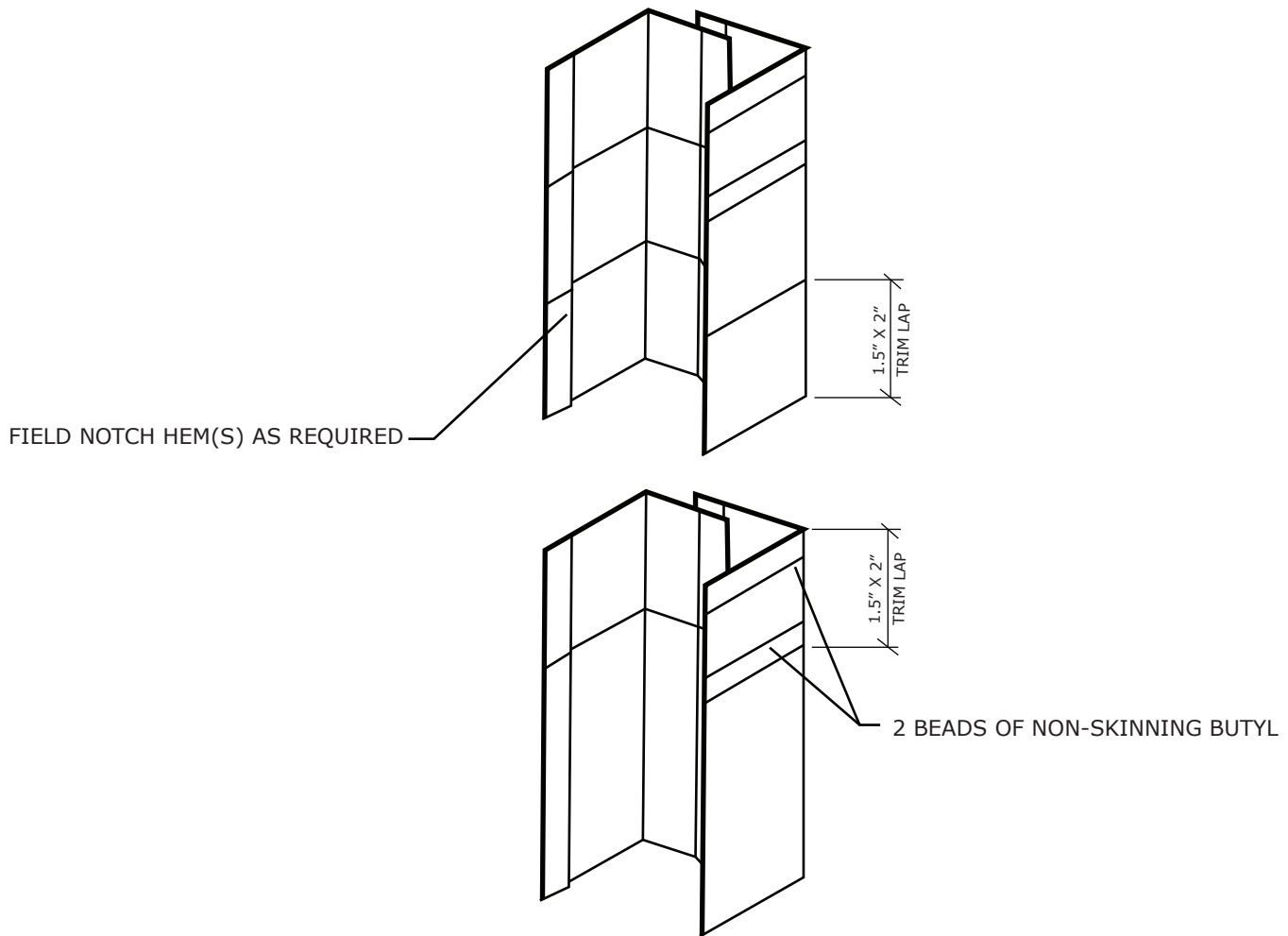
AD-LOC FC 100

DATE

APR 1/25

REV.

A



NOTE:

- RIVET OR STITCH SCREW AS NECESSARY

NOTES:

A. Details are for guidelines only, and may not be suitable for all building designs and conditions.

B. Screw lengths may vary per customer request.

PROFILE

IMP WALL-ROOF PANELS

APPLICATION

FREEZER-COOLER

DETAILS

MATERIALS

TYPE

AD-LOC FC 100

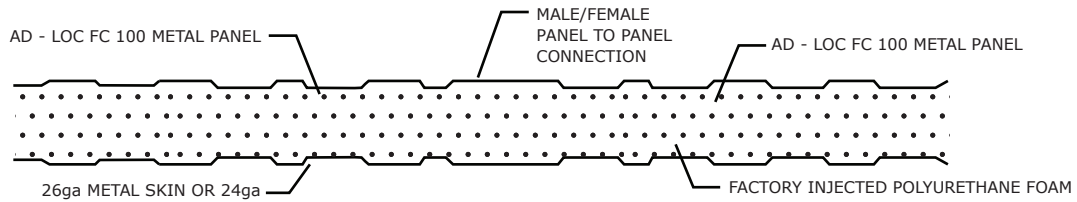
DATE

APR 1/25

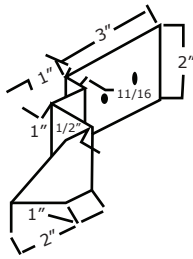
REV.

A

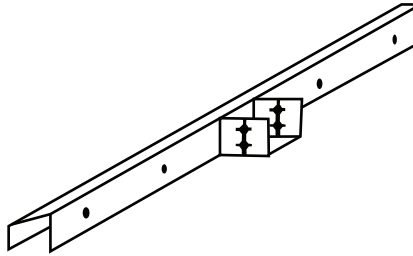
MATERIAL INFORMATION



PANEL TO PANEL CONNECTION DETAIL



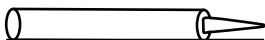
18ga EDGE CLIP



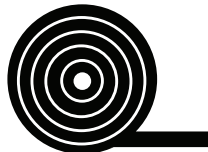
TRUSS SEAT



ZAMIC PIN



SILICONE CAULKING



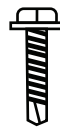
SILL GASKET



PANCAKE SCREW



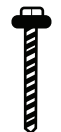
STITCH (A PT.) SCREW



SELF-DRILL (SD) SCREW



SELF-DRILL (SD) SCREW
W/ NEOPRENE WASHER



STITCH (A PT.) SCREW
W/ NEOPRENE WASHER

NOTES:

A. Details are for guidelines only, and may not be suitable for all building designs and conditions.

B. Screw lengths may vary per customer request.

PANEL CUTTING

Personnel cutting panels should always wear safety glasses, gloves and long sleeve shirts.

Panel cutting should take place prior to installation when possible.

Use the following cutting tools to avoid panel damage:

- ✓ Circular saw with carbide tipped metal cutting blade
- ✓ Insulated metal panel saw
- ✓ Band saw with metal cutting blade



Use care when using reciprocating saws to avoid panel delamination: make sure the blade is sharp and let the saw cut at its own pace - do not force.



Do NOT use abrasive saws to cut panels.



**WARNING: USE OF ABRASIVE SAWS/
GRINDER BLADES WILL DAMAGE THE
PAINT FINISH AND METAL FACINGS!**

For small penetrations, cut each panel face with a portable router, then cut the foam with a serrated knife.



Metal flashings may be cut with power snips, nibblers or hand snips.



NOTES:

A. Details are for guidelines only, and may not be suitable for all building designs and conditions.

B. Screw lengths may vary per customer request.

MATERIAL HANDLING - Bundles

Identify and mark off unloading area prior to material delivery.

Verify adequate material handling equipment with the proper reach and capacity is on site. Bundle weights are listed on the bill of lading, and have a maximum weight of 5,000 lbs.

Pre-determine the panel storage area prior to material delivery. It must be secure, flat, well-drained and reasonably level.

Panels are shipped via flatbed trailer, and can be off-loaded from the side of the trailer using forklifts.

Guidelines for off-loading are as follows:

Panel Thickness	Bundle Length
2-2.5" Thick	<33' = 1 Forklift
3" Thick	<33' = 1 Forklift
4-6" Thick	<33' = 1 Forklift

Tape foam blocks on forks to prevent over-engagement of panel bundles



WARNING: USE PADDING OR BLOCKING ON FORKLIFT MASTS TO PROTECT PANEL EDGES AND PREVENT OVERENGAGEMENT INTO ADJACENT BUNDLES!



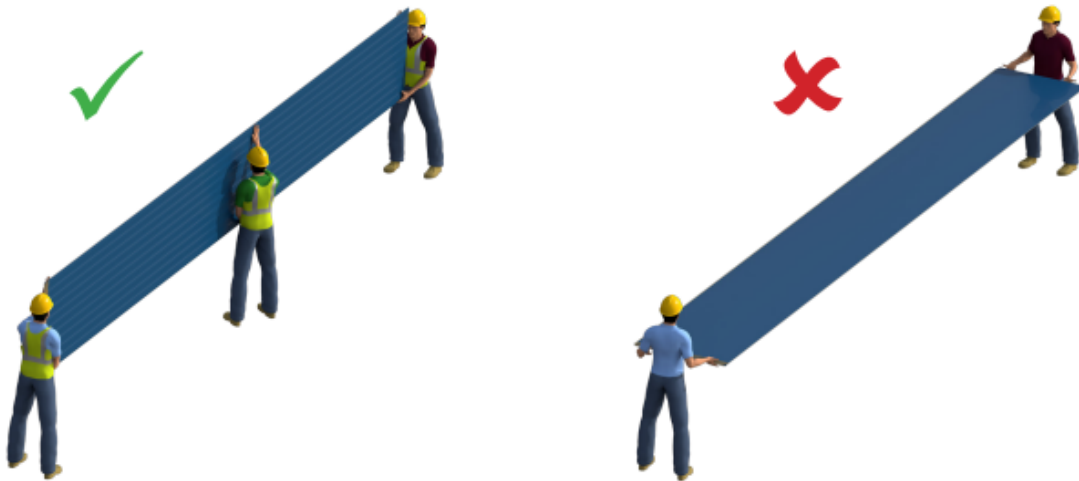
NOTES:

A. Details are for guidelines only, and may not be suitable for all building designs and conditions.

B. Screw lengths may vary per customer request.

HOW TO PROPERLY CARRY AND HANDLE A PANEL

Carry panels on edge with sufficient manpower to prevent straining.



NOTES:

A. Details are for guidelines only, and may not be suitable for all building designs and conditions.

B. Screw lengths may vary per customer request.